



GAT MONTHLY MEMBERSHIP PROGRESS REPORT

Results as of: 4/30/2023

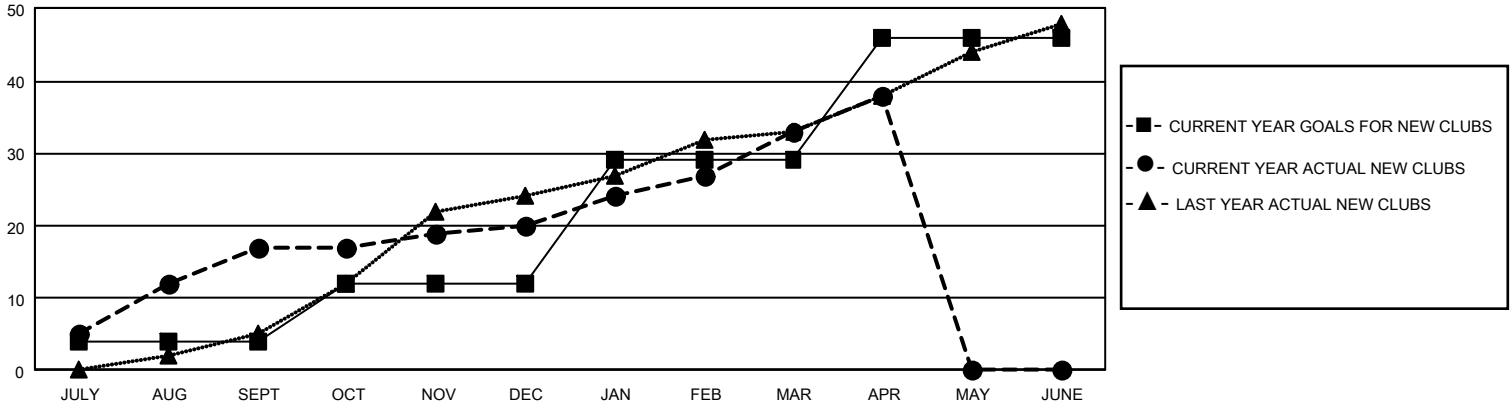
GAT Constitutional Area 7

REPORT DOES NOT INCLUDE CLUBS IN UNDISTRICTED AREAS.

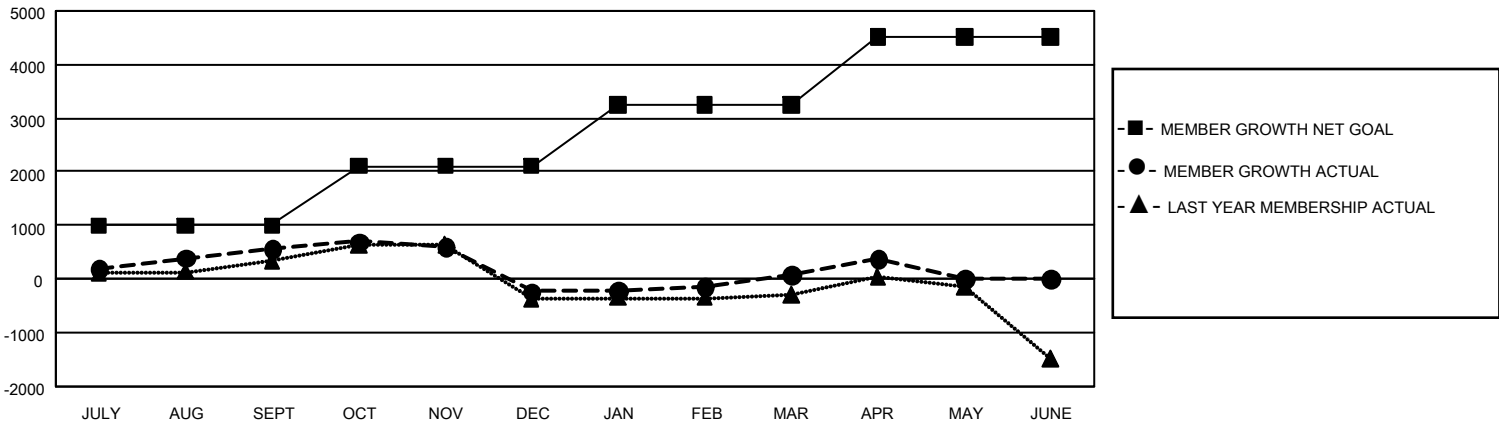
Clubs			
RESULTS FOR 2022-2023			
QUARTER	NEW CLUB GOAL	NEW CLUBS	DROPPED CLUBS
JULY/AUG/SEPT	12	17	13
OCT/NOV/DEC	24	3	15
JAN/FEB/MAR	51	13	2
APR/MAY/JUNE	51	5	1

Members			
RESULTS FOR 2022-2023			
QUARTER	MEMBER GROWTH NET GOAL	MEMBER GROWTH ACTUAL	DROPPED MEMBERS ACTUAL (including transfers)
JULY/AUG/SEPT	996	1,894	990
OCT/NOV/DEC	1105	1,218	1,881
JAN/FEB/MAR	1149	1,442	1,007
APR/MAY/JUNE	1270	729	353

GOALS AND ACTUAL NEW CLUBS CUMULATIVE



GOALS AND ACTUAL MEMBERS CUMULATIVE



DROPPED CLUBS: 31	
DROPPED MEMBERS	
DECEASED	447
CLUB CANCELLED	140
OTHER	3,648
TOTAL	4,235

1,151 CLUBS OF 1,881 ADDED 1 OR MORE NEW MEMBERS

[CLICK HERE FOR CUMULATIVE MEMBERSHIP DATA](#)

GENDER DISTRIBUTION	
MALE	24,700 (57.75%)
FEMALE	18,058 (42.22%)
NON BINARY	7 (0.02%)
PREFER NOT TO ANSWER	9 (0.02%)
TOTAL FAMILY UNIT MEMBERS	7,381
FAMILY MEMBERS PAYING HALF DUES	3,983